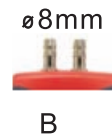


# MANOMETER



## Digital Manometer 8252/8205/8215 8230/82100

- Measure pressure gauge/differential pressure
- Over-range indication with error messages
- 11 units or 5 units for selection (metric, imperial)
- Accumulative time shows in recording period
- Plastics & metal & 2 size lug available  
4mm, metal only (A)  
8mm, metal or plastic(B, C)



Model	8252	8205	8215	8230	82100
Range & (Resolution)					
psi	± 2.000 <sup>(0,001)</sup>	± 5.000 <sup>(0,003)</sup>	± 15.00 <sup>(0,01)</sup>	± 30.00 <sup>(0,02)</sup>	± 100.0 <sup>(0,1)</sup>
kPa	± N/A	± 34.47 <sup>(0,02)</sup>	± 103.4 <sup>(0,1)</sup>	± 206.8 <sup>(0,2)</sup>	± 689.5 <sup>(0,4)</sup>
mmHg	± N/A	± 258.6 <sup>(0,2)</sup>	± 775.7 <sup>(0,5)</sup>	± 1551 <sup>(1)</sup>	± 5171 <sup>(3)</sup>
Kg/cm2	± N/A	± 0.352 <sup>(0,001)</sup>	± 1.055 <sup>(0,001)</sup>	± 2.109 <sup>(0,002)</sup>	± 7.031 <sup>(0,004)</sup>
mbar(hpa)	± 137.9 <sup>(0,1)</sup>	± 344.7 <sup>(0,2)</sup>	± 1034 <sup>(1)</sup>	± 2068 <sup>(2)</sup>	± 6895 <sup>(4)</sup>
bar	± 0.138 <sup>(0,001)</sup>	± 0.345 <sup>(0,001)</sup>	± 1.034 <sup>(0,001)</sup>	± 2.068 <sup>(0,002)</sup>	± 6.895 <sup>(0,004)</sup>
inH2O	± 55.36 <sup>(0,01)</sup>	± 138.4 <sup>(0,1)</sup>	± 415.2 <sup>(0,3)</sup>	± 830.4 <sup>(0,5)</sup>	± 2768 <sup>(2)</sup>
cmH2O	± N/A	± 350.2 <sup>(0,2)</sup>	± 1051 <sup>(1)</sup>	± 2101 <sup>(2)</sup>	± 7004 <sup>(4)</sup>
inHg	± N/A	± 10.18 <sup>(0,01)</sup>	± 30.54 <sup>(0,02)</sup>	± 61.08 <sup>(0,04)</sup>	± 203.6 <sup>(0,2)</sup>
ftH2O	± N/A	± 11.53 <sup>(0,01)</sup>	± 34.60 <sup>(0,02)</sup>	± 69.20 <sup>(0,04)</sup>	± 230.7 <sup>(0,2)</sup>
oz/inch2	± N/A	± 80.00 <sup>(0,05)</sup>	± 240.0 <sup>(0,2)</sup>	± 480.0 <sup>(0,3)</sup>	± 1600 <sup>(1)</sup>
mmH2O	± 1401 <sup>(1)</sup>	N/A	N/A	N/A	N/A

### Accuracy

Accuracy	± 0.3% of full scale at ±25°C(77°F)
Repeatability	± 0.2%~0.5% of full scale
Linearity/Hysteresis	± 0.29% to 1% of full scale
Combined accuracy	± 1.0% of full scale

Response time 0.5 second

Compensated temp. range 0~50°C

LCD size (mm, HxW) 29x51

Operating temp. 0~50°C

Operating RH% Humidity < 80%

Storage temp. -20~50°C

Storage RH% Humidity < 90%

Dimension(mm, LxWxT) 182x72x30

Weight ~150g

Battery 9V battery or adaptor

Standard Package Meter/ battery/ manual/ connection hose/ hard carry case

### UNITS CONVERSION :

1psi x 6.8947=kpa , 1psi x 68.947=mbar(hpa) , 1psi x 0.068966=bar ,  
1psi x 703.069=mmH2O, 1psi x 51.715=mmHg , 1psix16=ozin<sup>2</sup> , 1psi x 51.71433=torr ,  
1psi x 6894.757=pascal (pa)

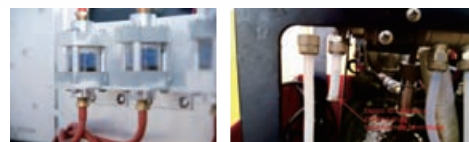
### Optional



**USB CABLE & SOFTWARE**  
P/N: VZUSBAZM  
**RS232 CABLE & SOFTWARE**  
P/N: VZRS232BN



**RUBBER HOLSTER / STAND**  
P/N: VM68601HA, BLUE  
P/N: VM68601HS+VM68601HS1, RED  
P/N: VM68601HS11+VM68601HSA, GREY



### TUBING FOR MANOMETERS

A: Withstand up to 100psi pressure/Orange color / fit 4mm lug/500mm long  
P/N: VW88205B

B: Withstand 0~30 psi pressure/Black color / fit 8mm lug /500mm long  
P/N: VW88205C

C: Withstand 30~100psi pressure/White color / fit 8mm lug /500mm long  
P/N: VW88230A

### Ordering Code

VZ8252AZ, 2psi 4mm metal manometer  
VZ8205AZ, 5psi 4mm metal manometer  
VZ8215AZ, 15psi 4mm metal manometer  
VZ8230AZ, 30psi 4mm metal manometer  
VZ82100AZ, 100psi 4mm metal manometer

\*for 8mm metal: VZxxxxAZBM

\*for 8mm plastic: VZxxxxAZB

VZUSBAZM, software kit